

GUIDANCE ON COVID-19

The following is a procedure for protecting farmers, farm staff and their families against the exposure and spread of Coronavirus.

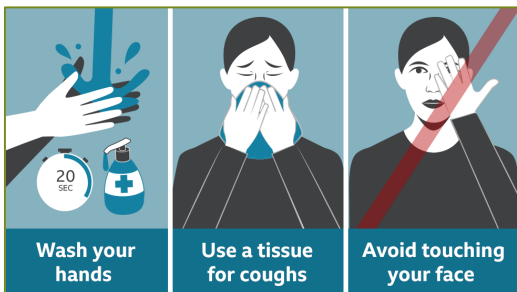
What is COVID-19 (Coronavirus)

A “novel coronavirus” means a new type of coronavirus that has not been seen in humans before. The coronavirus recently identified in China is one of these. The infection caused by this new coronavirus is named COVID-19.

ON-FARM BIOSECURITY

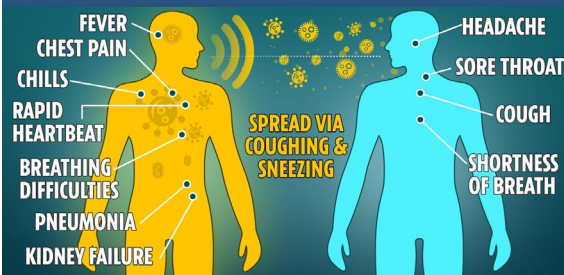


- Biosecurity plans are in place on most farms to limit animal disease, small adaptations will make these plans work in light of Covid-19.
- Robust biosecurity starts with visitor management: **Limit farm access to essential visitors only!**
- Biosecurity protocols have to be clear to all farm staff and communicated to visitors. Most importantly, ensure **direct contact is minimised** and **hands are washed with soap and water** regularly and hand sanitizer is used often. Always follow HSE guidelines.
- Place a biosecurity sign at the farm entrance.
- **Keep a record of all visitors to the farm**
- Designate an area where visitors are received away from other members of the household with facilities to wash hands and enough room to keep a safe distance of 2 meters. This could be the dairy, the farm office or an equipment shed.
- Wear disposable gloves when touching shared equipment and wash hands thoroughly afterwards.
- **DO NOT touch your eyes, nose or mouth if your hands are not clean.**



Coronavirus ALERT

The symptoms of 2019-nCoV and how it spreads



LEARNINGS



Coronavirus is spread in sneeze or cough droplets.

- Cover your mouth and nose with a tissue or sleeve when you cough or sneeze.
- Put used tissues into a bin and wash your hands.

You could get the virus if you:

- Come into close contact with someone who has the virus and is coughing or sneezing.
- Touch surfaces that someone who has the virus has coughed or sneezed on.

Anyone who knows they have been in close contact with a confirmed case in the last 14 days should:

- Advise farm visitors to postpone the visit where possible and inform essential visitors of the current status before entering the farm.
- Isolate themselves from other people.
- Phone their GP, or emergency department - if this is not possible, phone 112, or 999.

HAND WASHING



HAND WASHING STEPS



FOR MORE INFORMATION
VISIT WWW.HSE.IE